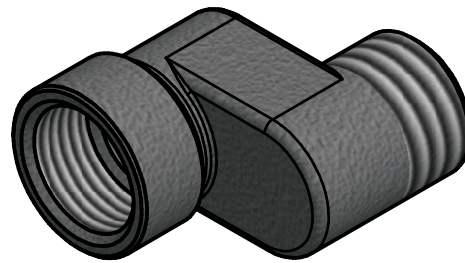
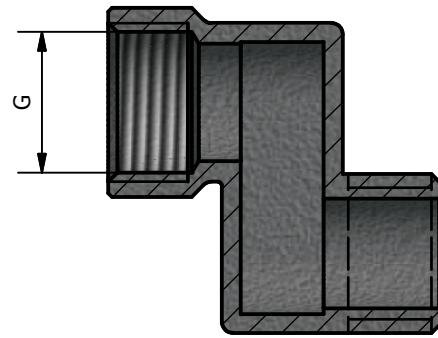


A-A ( 1 : 1 )



ARTICLE	SIZE	G	L	H
DRN 3810	3/8x10	3/8	10	45
DRN 3820	3/8x20	3/8	20	45
DRN 3830	3/8x30	3/8	30	45
DRN 3840	3/8x40	3/8	40	45
DRN 3850	3/8x50	3/8	50	45
DRN 3860	3/8x60	3/8	60	45
DRN 1210	1/2x10	1/2	10	45
DRN 1220	1/2x20	1/2	20	45
DRN 1230	1/2x30	1/2	30	45
DRN 1240	1/2x40	1/2	40	45
DRN 1250	1/2x50	1/2	50	45
DRN 1260	1/2x60	1/2	60	45

CONFORMITY

- 1) DM 174 del 6 Aprile 2004
- 2) UNI EN ISO 9001-2008
- 3) UNI EN ISO 228
- 4) UNI EN 1254-4
- 5) UNI EN 9227
- 6) UNI EN 2819

WORKING PRESSURE MAX	16 BAR
WORKING TEMPERATURE MAX	120°C

00	Prima emissione	Delaini M.	03/08/2016
Rev.	Nota Revisione	Approvatore	Data Approvazione
Toll Gen:	JS13	Stato sup.:	Nichelato
Filetto:	ISO 228	Note tecniche:	
Peso lavorato:	Peso grezzo:	N° stampo:	
Materiale: CW 617N EN12165		Disegnatore: Delaini P.	Data: 03/08/2016
Codice: DRN Scheda			
Descrizione: Eccentric spacer female male for heating			
TDM BRASS Italian Fittings			